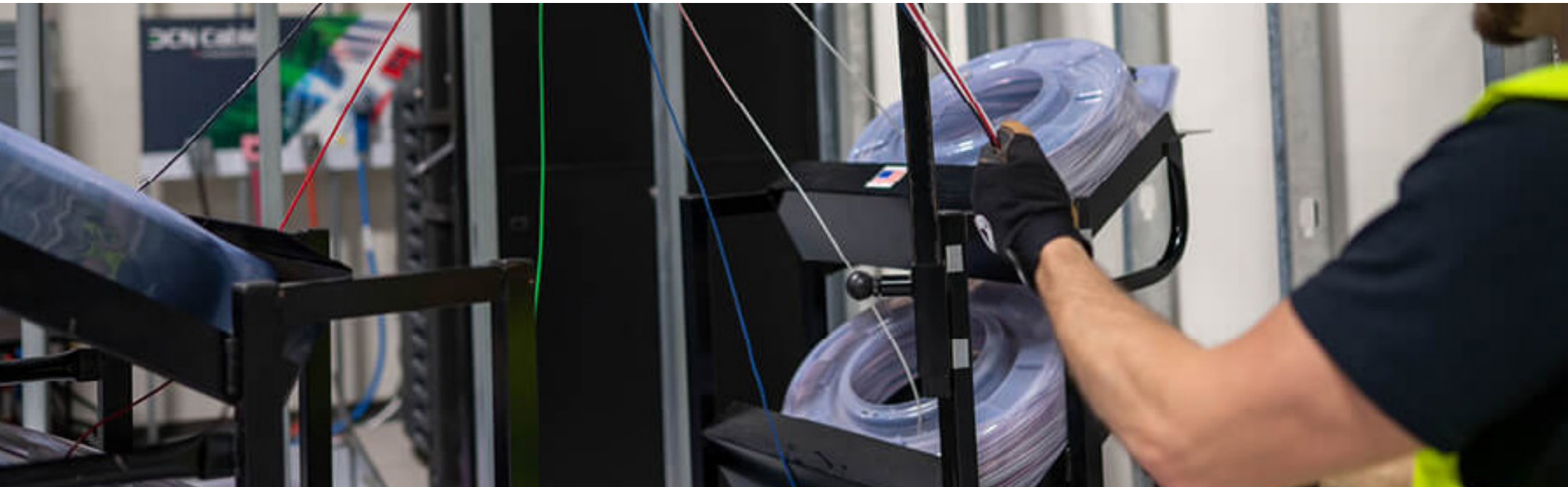




Work with Wolff Bros. Supply to help improve your productivity and maximize efficiency on circuit wire pulls with Southwire products.



Southwire SIMpull® Coil PAK™ Wire Payoff and SIMpull BARREL™ Cable Drum are a winning combination, adding a new level of flexibility to circuit wire installations and eliminating heavy, bulky spools completely. By themselves, each of these innovative components can help improve your productivity. But when used together, they combine to help provide a significant impact on the **time**, **margins** and **labor** associated with all your circuit wire pulls.

SIMPull® Coil PAK™ Wire Payoff

Available in a variety of sizes, colors, configurations, and package lengths, the SIMpull® Coil PAK™ wire payoff offers a wide range of flexibility, making it the premier choice for versatility on the job. Pulling circuit wire has never been easier.

- Stationary package design reduces wire pulling effort & helps protect wire
- Built-in handle for easy carrying
- SIMpull® NoLube® jacket reduces wire pulling tension
- Incorporated payoff feature for less setup
- Avoid broken spools and spool over-turn
- Designed to help reduce potential lifting / handling pulling injuries

Accessories available:

- Cart
- Assembly roller
- Tester
- Feeder
- Lighting
- Lay-in-lug
- Maxpunch
- Basket grip

SIMPull BARREL™ Cable Drum

The SIMpull BARREL™ Cable Drum is ideal for jobsites with longer runs and home-run pulls. Designed to simplify branch circuit installations, the SIMpull BARREL™ Cable Drum contains up to 7 paralleled conductors per BARREL, increasing productivity and reducing the potential for injury while avoiding broken spool, excess material handling and scrap.

- Easier wire pulling with SIMpull® NoLube® wire jacket
- Stationary package design to reduce wire pulling tension
- Designed to help lower potential for lifting / handling / pulling injuries
- Patented parallel construction to reduce material handling and setup
- Avoid broken spools and spool over-turn
- Available in #10, 12 and 14 up to 7 conductors, #8 and 6 up to 4 conductors